

DARCHEM THERMAL PROTECTION

SITE SERVICES

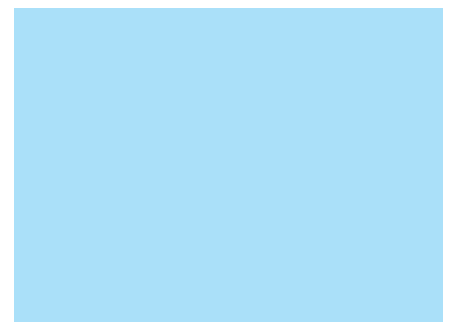
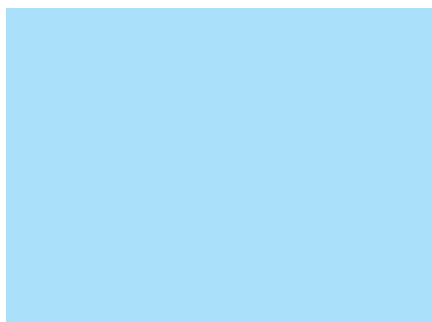
SINCE 2007 DARCHEM HAVE DEPLOYED PERSONNEL WORLDWIDE, TO SUPPORT OVER 900 ON-SITE PROJECTS.

STRENGTHS

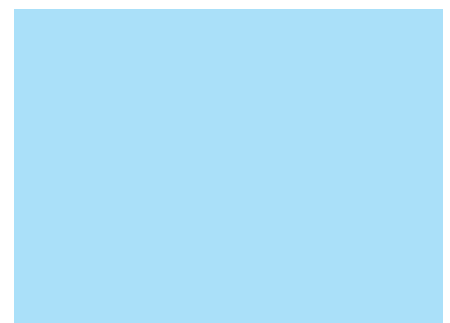
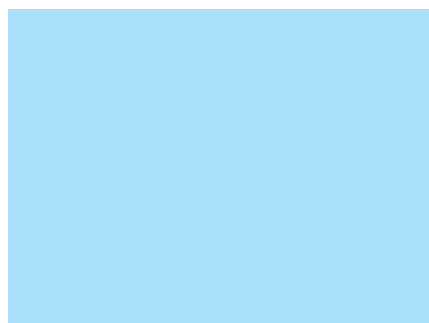
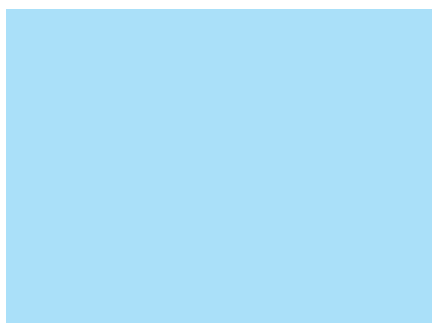
- Coloured Cloth to be in line with plant identification
- DARVENT™ grilles to aid with ventilation to reduce the internal ambient temperature of protected item and prevent the build-up of gas.
- Access Doors for maintenance or operating purposes.
- Custom designed Rain Jackets for added weather protection.

ON SITE SUPPORT

- Skilled site engineers to conduct front end surveys, installation, supervision, inspection walk-downs and after-sales support
- Training of local labour at the workplace, which enables the end-user to retain the skills needed for future maintenance and inspection requirements
- Co-operation of installation activities on critical paths, whilst accommodating operational constraints



Equipment can be surveyed at site, modelled using the latest 3D CAD software and installed by skilled Darchem Engineers.



Darchem Offers hands on installation, along with training and supervision of local contractors.